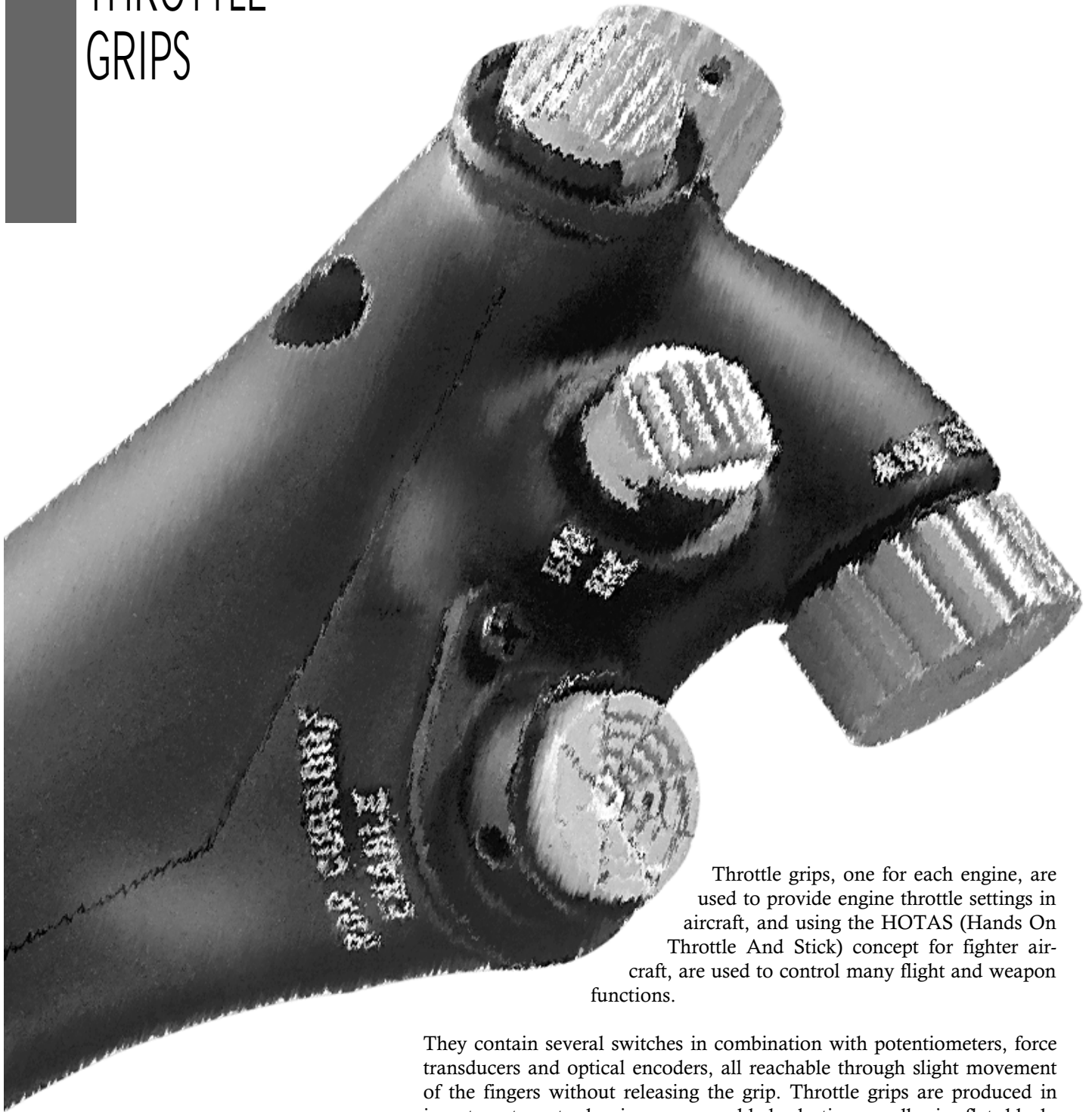


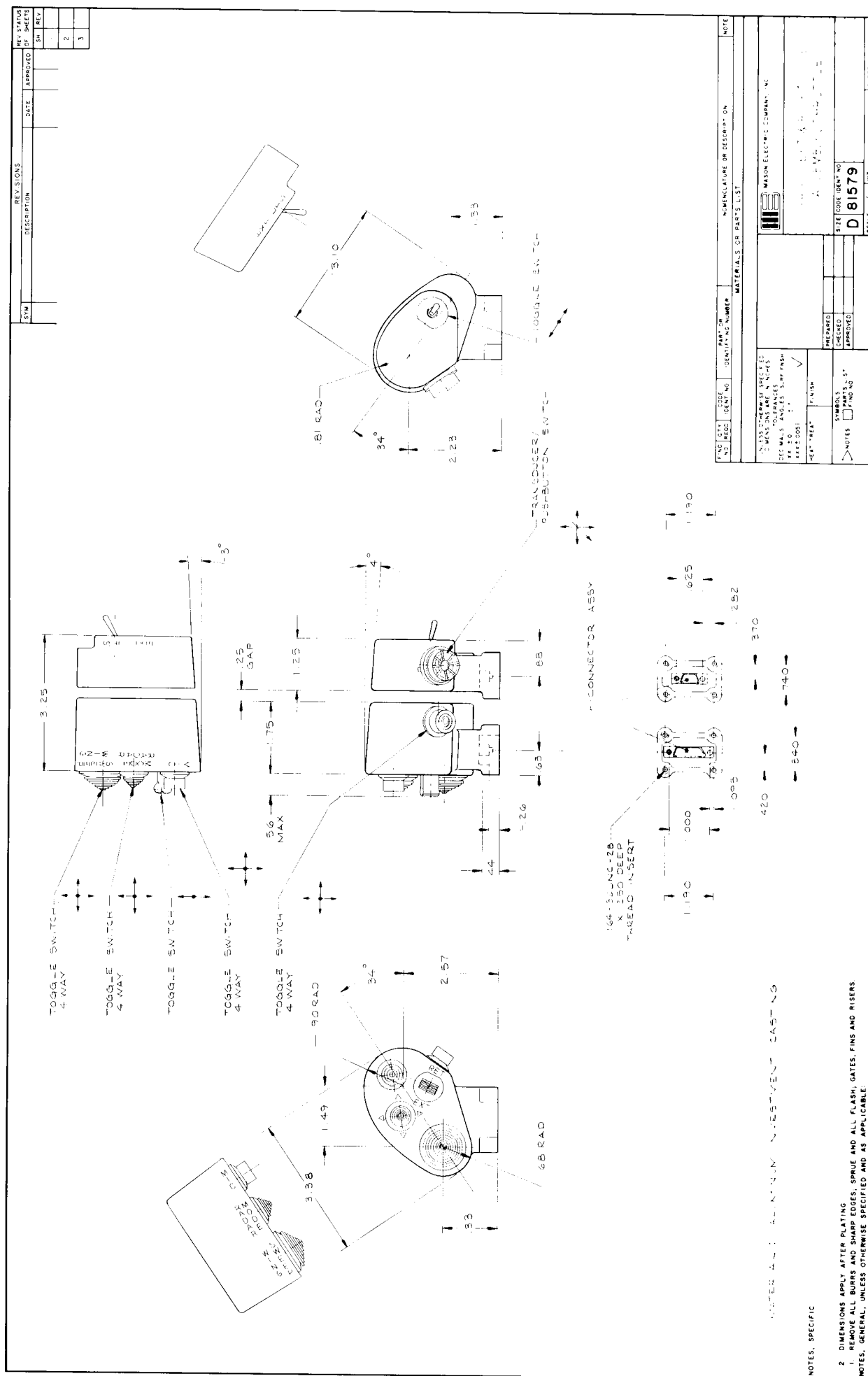
THROTTLE GRIPS



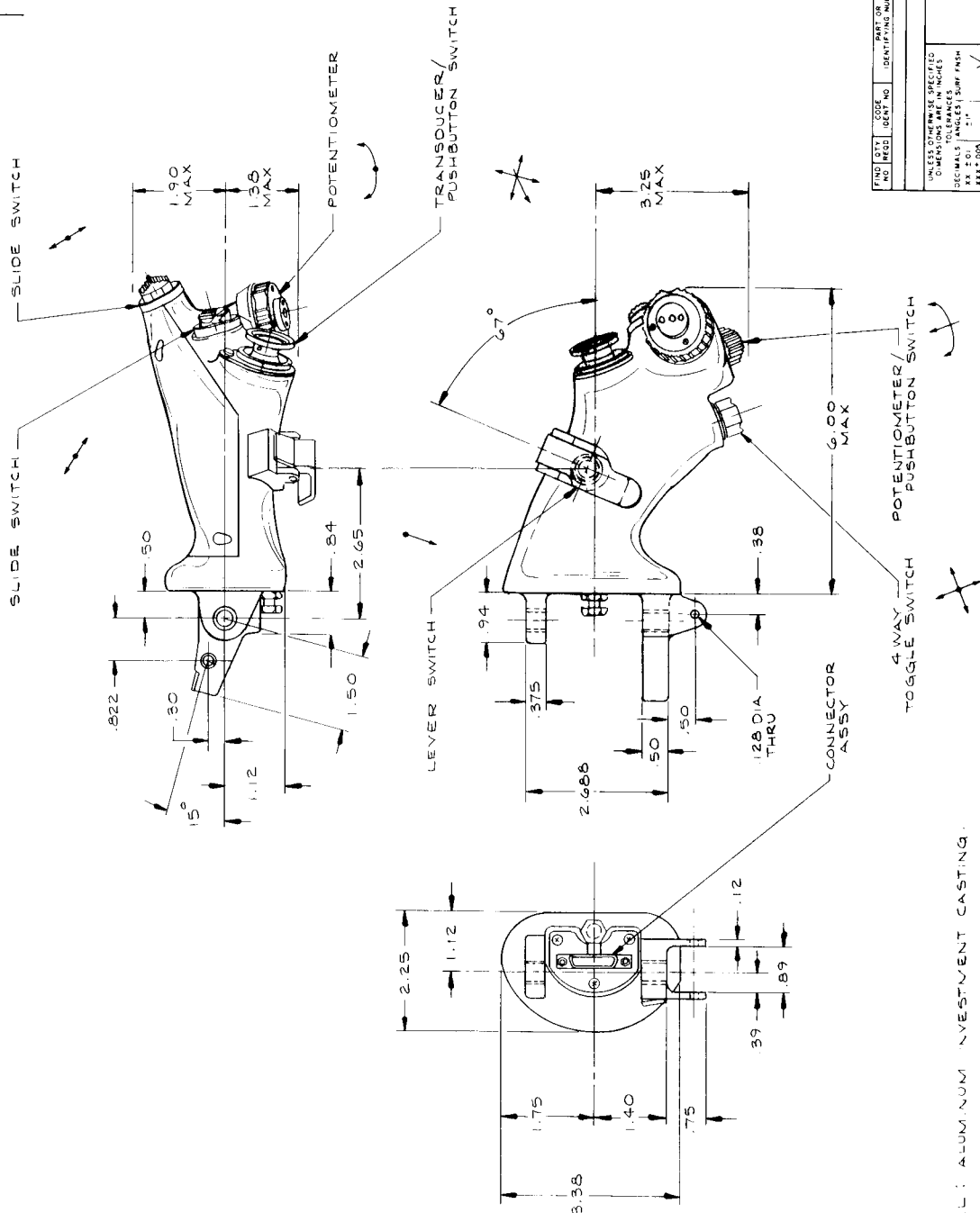
Throttle grips, one for each engine, are used to provide engine throttle settings in aircraft, and using the HOTAS (Hands On Throttle And Stick) concept for fighter aircraft, are used to control many flight and weapon functions.

They contain several switches in combination with potentiometers, force transducers and optical encoders, all reachable through slight movement of the fingers without releasing the grip. Throttle grips are produced in investment cast aluminum or molded plastic, usually in flat black, although other colors are available.

These grips are mounted from one side using threaded fasteners, or from the base using threaded fasteners or a threaded coupling. Those having an electrical connector attached to the grip are readily attached and removed from the aircraft without having to remove, feed wires through, or otherwise disturb other equipment on the aircraft. Resultant improvements in Mean Time To Repair are dramatic.



REV STATUS		REVISIONS		REV STATUS	
SYM	DESCRIPTION	DATE	APPROVED	SYM	REV
					1
					2
					3



MATERIAL: ALUMINUM INVESTMENT CASTING.

NOTES, SPECIFIC

2 DIMENSIONS APPLY AFTER PLATING

1. REMOVE ALL BURRS AND SHARP EDGES, SPRUE AND ALL FLASH, GATES, FINS AND RISERS.

NOTES, GENERAL, UNLESS OTHERWISE SPECIFIED AND AS APPLICABLE

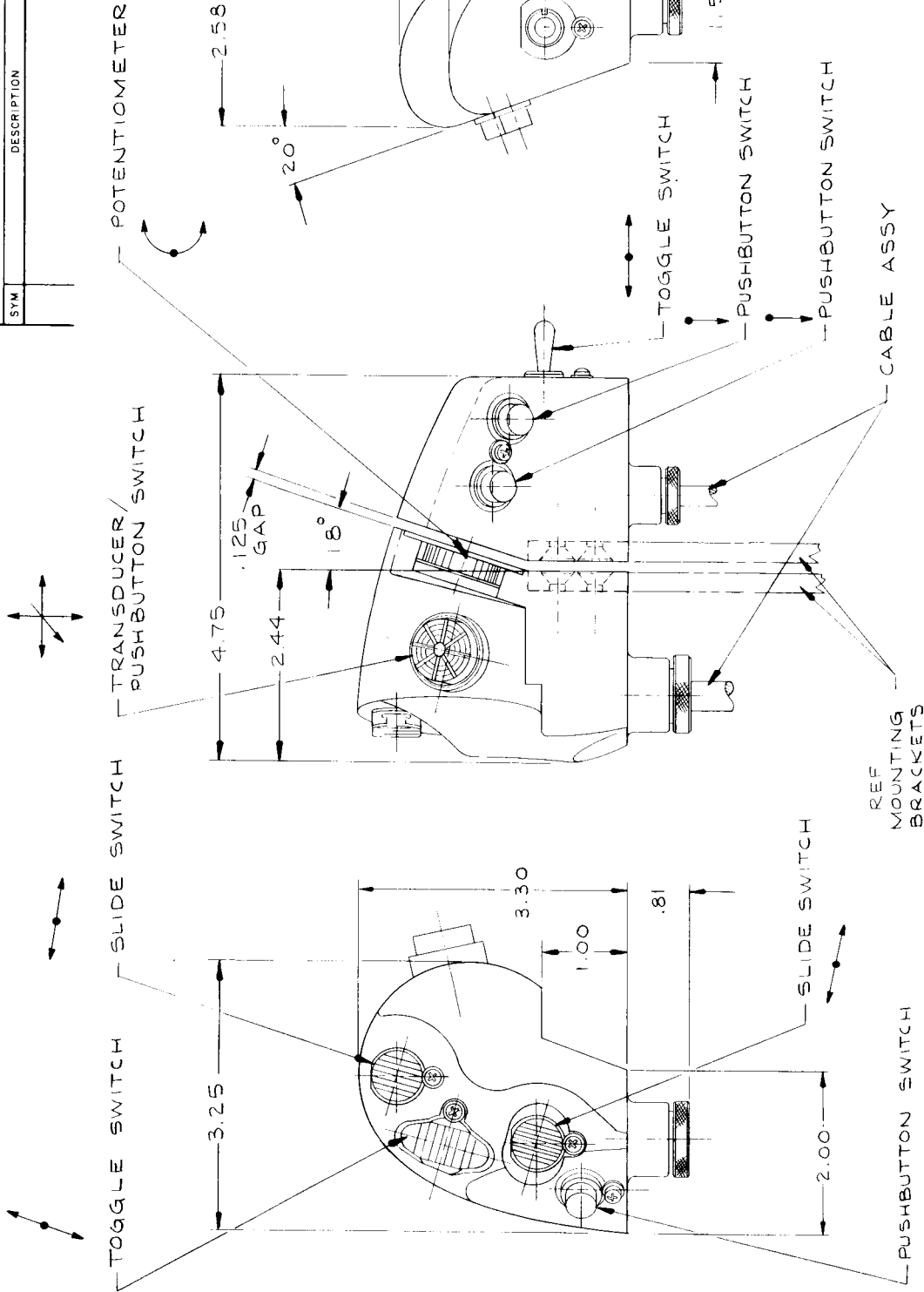
FIG. NO.	DATE	BY	CHKD.	APP'D.	DESCRIPTION	NOTE
1						

UNLESS OTHERWISE SPECIFIED		MATERIALS OR PARTS LIST	
FIG. NO.	DATE	BY	CHKD.
1			
2			
3			
4			
5			
6			
7			
8			
9			
10			
11			
12			
13			
14			
15			
16			
17			
18			
19			
20			
21			
22			
23			
24			
25			
26			
27			
28			
29			
30			
31			
32			
33			
34			
35			
36			
37			
38			
39			
40			
41			
42			
43			
44			
45			
46			
47			
48			
49			
50			
51			
52			
53			
54			
55			
56			
57			
58			
59			
60			
61			
62			
63			
64			
65			
66			
67			
68			
69			
70			
71			
72			
73			
74			
75			
76			
77			
78			
79			
80			
81			
82			
83			
84			
85			
86			
87			
88			
89			
90			
91			
92			
93			
94			
95			
96			
97			
98			
99			
100			

SIZE CODE IDENT NO
D 81579

SHEET

SYMBOL		REVISIONS		REV STATUS	
SYMBOL	DESCRIPTION	DATE	APPROVED	SH	REV
				1	
				2	
				3	



FIND NO	QTY REQD	CODE IDENT NO	PART OR IDENTIFYING NUMBER	NOMENCLATURE OR DESCRIPTION	NOTE
MATERIALS OR PARTS LIST					
UNLESS OTHERWISE SPECIFIED DIMENSIONS ARE IN INCHES					
TOLERANCES					
DECIMALS ANGLES SURF FINISH					
XX ±.01 ±1° XXXX.005 ✓					
HEAT TREAT		FINISH			
NOTES		SYMBOLS		PARTS LIST	
		□ FIND NO			
		PREPARED		CHECKED	
		APPROVED			
SIZE CODE IDENT NO					
C 81579					
SCALE 1/1 WT					
SHEET					

MATERIAL: ALUMINUM INVESTMENT CASTING

2. DIMENSIONS APPLY AFTER PLATING.
1. REMOVE ALL BURRS AND SHARP EDGES; SPRUE AND ALL FLASH; GATES, FINS AND RISERS.
- NOTES, GENERAL, UNLESS OTHERWISE SPECIFIED AND AS APPLICABLE:

