

Operation Name: KRYPTON

Mission: Air Strike on Iranian Facilities Developing Weapon Grade Plutonium

Target Area: Hormozgan Province, Iran

Objectives: Bomb Key Locations of Manufacturing Facilities/Shipping Port

Mission Development:

Plutonium nuclear weapons; in order to use plutonium in nuclear weapons or nuclear fuel, however, it must be separated from the rest of the spent fuel in a reprocessing facility. Plutonium separation is easier than uranium enrichment because it involves separating different elements rather than different isotopes of the same element, and it uses well known chemical separation techniques. However, since the spent fuel is highly radioactive, this process requires heavily shielded facilities with remote-handling equipment.

The latest report by the United Nations' nuclear watchdog condemning Iran's secret nuclear program has reinforced American fears about Iranian intentions. According to the report published by the International Atomic Energy Agency (IAEA), Iran has secretly produced plutonium, a material generally used only for nuclear weapons.

It's believed that Iran is producing large amounts of plutonium-240, as would be contained in reactor-grade plutonium, can cause a weapon to detonate early and "fizzle," causing a smaller explosion than intended. However, even a weapon that fizzles would cause an explosion roughly equivalent to 1,000 tons (1 kiloton) of TNT. A weapon of this size could kill tens of thousands of people if detonated in a city, which clearly demonstrates that even reactor-grade plutonium would present a potent danger in the hands of terrorists.

Iran has the power to make an unstable Middle East even worse: It could directly target and kill Americans in the region, exacerbate a number of the region's festering conflicts, and potentially threaten the global oil supply — and thus the global economy.

Sites that have been identified, or ones that were known in the past, have typically been small, easily concealed from reconnaissance satellites, and located in densely populated urban areas.

Our U.S. satellites have identified three locations where materials needed for the development of Plutonium are being transported and processed.

The first is in the small city of Gachooyeh (referred to in this mission as Sector 1), the city of Honguyeh (Sector 2) and the port city of Chiruyeh (Port).

Reconnaissance also shows that a fourth city, Kemeshk (Sector 3) is where the produced materials are shipped to being airlifted to other regions for additional processing. See attached Mission Charts with known routes used by ground convoys.

Mission Air Threats:

Consist of AAA in all sectors. There are MIGs on constant air patrol in Sectors 1, 2 and 3. Intel has confirmed that a small convoy of materials are on their way to the port city of Chiruyeh. It has been confirmed that the lead ship in route is a Russian made Grisha. The Albatros class (NATO reporting name: Grisha) have a limited range and are mainly used in coastal waters. They are equipped with a variety of ASW weapons and an SA-N-4 surface-to-air missile launcher.

On Station:

This mission is under the command of the USS Stennis Task Force Fleet operating in the Persian Gulf. It consists of the Stennis, the USS Normandy, USS Oliver Hazard Perry and the USS Tarawa. If the fleet is in range of the incoming ships, they will be the first to strike, followed immediately by the alert aircraft.

The Stennis has three squadrons of Hornets (12 aircraft) on alert. Two squadrons are for CAP assignment, the third for anti-ship.

Stennis command will also monitor and control the ground attack from the ten A-10C stationed on the islands of Abu Musa and Sirri. Primary GROUND TARGETS are entered as WAYPOINTS into the A-10C flight plans for Sectors 1 & 2. These are the targets that must be destroyed for this mission to be successful.

A KC-130 tanker will be available if needed. AWAC will also be on station, Hornets check-in once airborne for status.

See posted Aircraft Mission Plan sheets.

Weather Outlook:

The weather will not be a factor.

All aircraft will launch when ordered.

All pilots, fly your assigned waypoints until you engage the enemy.

Good luck gentlemen!

United States Naval Forces Central Command (NAVCENT)

USS Stennis:

TACAN: 74
ICLS: Channel 11
Radio Freq: 127.5
BRC: 289
Final Bearing: 280
Downwind Heading: 109

NATO E-3A AWAC:

FREQ: 251
Callsign: FOCUS
ALT: 40,000 ft
IAS: 215 kn

Air Force KC-130 Tanker:

TACAN: 47Y
FREQ: 299
Callsign: SHELL
ALT: 9,000 ft
IAS: 289 kn

F/A-18C Pre-Set Comm 1 Radio Frequencies:

Channel 1: 251 AWAC
Channel 2: 299 Tanker
Channel 3: 127.5 Stennis

Mission Planning/Execution Notes:

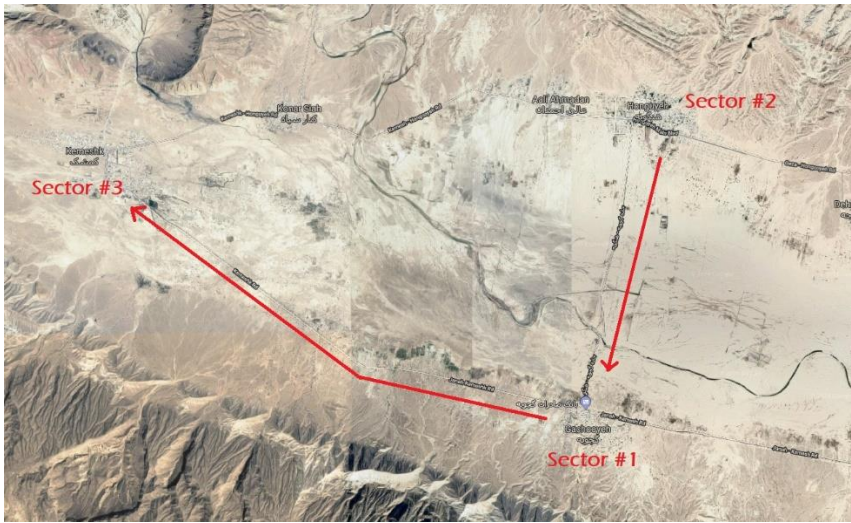
Alert Hornets on the Stennis will await launch orders from the AIR BOSS . . . engines are running, fuel and ordnance in place and you are ready to launch from your selected CAT when instructed to.

The carrier and task force will go into GENERAL QUARTERS and the task force will begin a Harpoon attack on approaching enemy vessels in the PORT target sector.

After LAUNCH Orders, follow assigned waypoints to SECTOR #1 & #2. Once airborne FENCE IN and contact AWAC (Comm 1, Channel 1). AWAC will assist you with incoming air targets.

Remember, the tanker is available if need.

Your job is to clear all airborne threats prior to the A-10 bombing target sectors.



F/A-18C MISSION DATA CARD

Callsign *Chevy ALERT Carrier Group*

Mission *OPERATION KYPTON*

Loadout *AIM-9L; 2xAIM-9L; 2xAIM-120C; AIM-120C; Fuel Tank; AIM-120C; 2xAIM-120C; 2xAIM-9L; AIM-9L*

INTERNAL FUEL *100%*

FUEL WEIGHT *13,047 LBS*

EMPTY WEIGHT *25,642 LBS*

WEAPONS *5,282 LBS*

MAX WEIGHT *51,899 LBS*

TOTAL WEIGHT *43,971 LBS*

Total WEIGHT *85%*

CHAFF *60*

FLARE *30*

GUN *100%*

WP	ICAO	SPEED	DIST	ALT	Description
01	<i>OUTBOUND</i>	<i>350</i>		<i>10K</i>	<i>Outbound Waypoint #1</i>
02	<i>SEC1</i>	<i>350</i>		<i>20K</i>	<i>CAP AREA</i>
03	<i>SEC2</i>	<i>350</i>		<i>20K</i>	<i>CAP AREA</i>
04	<i>SEC3</i>	<i>350</i>		<i>20K</i>	<i>CAP AREA</i>
05	<i>PORT</i>	<i>350</i>		<i>AR</i>	<i>PORT target sector</i>
06	<i>RTB</i>	<i>AR</i>		<i>AR</i>	
07					
08					
09					<i>AWAC: FOCUS; 40K; Comm 1; Ch 1</i>
10					
11					<i>TANKER: 47Y; 9K; Comm 1; Ch 2</i>
12					
13					<i>MOTHER: 127.5 Comm 1; Ch 3</i>
14					<i>TACAN: 74X ICLS: 11</i>
15					

* AR = AS REQUIRED

F/A-18C MISSION DATA CARD

Callsign **Ford Airbourne CAP Group**

Mission **OPERATION KYPTON**

Loadout **AIM-9L; 2xAIM-9L; 2xAIM-120C; AIM-120C; Fuel Tank; AIM-120C; 2xAIM-120C; 2xAIM-9L; AIM-9L**

INTERNAL FUEL **100%**

FUEL WEIGHT **13,047 LBS**

EMPTY WEIGHT **25,642 LBS**

WEAPONS **5,282 LBS**

MAX WEIGHT **51,899 LBS**

TOTAL WEIGHT **43,971 LBS**

Total WEIGHT **85%**

CHAFF **60**

FLARE **30**

GUN **100%**

WP	ICAO	SPEED	DIST	ALT	Description
01	OUTBOUND	350		10K	Outbound Waypoint #1
02	SEC1	350		20K	CAP AREA
03	SEC2	350		20K	CAP AREA
04	SEC3	350		20K	CAP AREA
05	PORT	350		AR	PORT target sector
06	RTB	AR		AR	
07					
08					
09					AWAC: FOCUS; 40K; Comm 1; Ch 1
10					
11					TANKER: 47Y; 9K; Comm 1; Ch 2
12					
13					MOTHER: 127.5 Comm 1; Ch 3
14					TACAN: 74X ICLS: 11
15					

* AR = AS REQUIRED

F/A-18C MISSION DATA CARD

Callsign **Dodge Airbourne Attack Group**

Mission **OPERATION KYPTON**

Loadout **AIM-9X; 2xMk-83; 2xMk-83; Mk-84; 2xMk-83; 2xMk-83; AIM-9X**

INTERNAL FUEL **100%**

FUEL WEIGHT **10,803 LBS**

EMPTY WEIGHT **25,642 LBS**

WEAPONS **11,369 LBS**

MAX WEIGHT **51,899 LBS**

TOTAL WEIGHT **47,814 LBS**

Total WEIGHT **92%**

CHAFF **60**

FLARE **30**

GUN **100%**

WP	ICAO	SPEED	DIST	ALT	Description
01	OUTBOUND	350		10K	Outbound Waypoint #1
02	PORT	AR		AR	PORT target sector
03	RTB	AR		20K	
04					
05					
06					
07					
08					
09					AWAC: FOCUS; 40K; Comm 1; Ch 1
10					
11					TANKER: 47Y; 9K; Comm 1; Ch 2
12					
13					MOTHER: 127.5 Comm 1; Ch 3
14					TACAN: 74X ICLS: 11
15					

* AR = AS REQUIRED

A-10C MISSION DATA CARD

Callsign	Victor Sector #1 Group	Mission	OPERATION KRYPTON
Loadout	2xAIM-9L; AAQ-28; 3xAGM-65H; 3xGBU-12; Fuel Tank; 3xGBU-12; 3xAGM-65H; ALQ-184		
INTERNAL FUEL	60%	FUEL WEIGHT	10,653 LBS
EMPTY WEIGHT	24,967 LBS	WEAPONS	10,953 LBS
MAX WEIGHT	46,476 LBS	TOTAL WEIGHT	46,573 LBS
Total WEIGHT	100%		
CHAFF	240	FLARE	120
GUN	100% AMMO TYPE: CM Combat Mix		

WP	ICAO	SPEED	DIST	ALT	Description
01	OUTBOUND	250	65M	17K	Fence In
02	SEC1	250	23M	15K	Target area
03	TGT1	220		15K	Primary Target #1
04	TGT2	220		15K	Primary Target #2
05	TGT3	220		15K	Primary Target #3
06	TGT4	220		15K	Primary Target #4
07	TGT5	220		15K	Secondary target
08	TGT6	220		15K	Secondary target
09	RTB	250		15K	Abu Musa Airfield
10					
11					TANKER: 47Y; 18K; Comm 1; Ch 2
12					
13					
14					
15					

* AR = AS REQUIRED

A-10C MISSION DATA CARD

Callsign	Papa Sector #2 Group	Mission	OPERATION KRYPTON
Loadout	2xAIM-9L; AAQ-28; 3xAGM-65H; 3xGBU-12; Fuel Tank; 3xGBU-12; 3xAGM-65H; ALQ-184		
INTERNAL FUEL	60%	FUEL WEIGHT	10,653 LBS
EMPTY WEIGHT	24,967 LBS	WEAPONS	10,953 LBS
MAX WEIGHT	46,476 LBS	TOTAL WEIGHT	46,573 LBS
Total WEIGHT	100%		
CHAFF	240	FLARE	120
GUN	100% AMMO TYPE: CM Combat Mix		

WP	ICAO	SPEED	DIST	ALT	Description
01	OUTBOUND	250	65M	17K	Fence In
02	SEC2	250	23M	15K	Target area
03	TGT1	220		15K	Primary Target #1
04	TGT2	220		15K	Primary Target #2
05	TGT3	220		15K	Primary Target #3
06	TGT4	220		15K	Primary Target #4
07	RTB	250		15K	Abu Musa Airfield
08	INITIAL	AR		AR	Runway FINAL
09	RWY 08	AR		AR	Threshold Runway 08
10					
11					
12					TANKER: 47Y; 18K; Comm 1; Ch 2
13					
14					
15					

* AR = AS REQUIRED

A-10C MISSION DATA CARD

Callsign	Hotel Port Attack Group	Mission	OPERATION KRYPTON
Loadout	ALQ-184; AAQ-28; 3xAGM-65D; 3xGBU-12; Fuel Tank; 3xGBU-12; 3xAGM-65D; 2xAIM-9M		
INTERNAL FUEL	60%	FUEL WEIGHT	10,653 LBS
EMPTY WEIGHT	24,967 LBS	WEAPONS	11,087 LBS
MAX WEIGHT	46,476 LBS	TOTAL WEIGHT	46,707 LBS
Total WEIGHT	100%		
CHAFF	240	FLARE	120
GUN	100% AMMO TYPE: CM Combat Mix		

WP	ICAO	SPEED	DIST	ALT	Description
01	OUTBOUND	250	25M	10K	Fence In
02	PORT	250	30M	18K	Beware enemy AAA
03	AAA1	220	12M	18K	AAA placement
04	AAA2	220		18K	AAA placement
05	AAA3	220		18K	AAA placement
06	AAA4	220		18K	AAA placement
07	PRT1	220		18K	Primary Warehouse #1
08	PRT2	220		18K	Primary Warehouse #2
09	PRT3	220		18K	Primary Warehouse #3
10	PRT4	220		18K	Primary Warehouse #4
11	RTB	250	40M	AR	Sirri Island Airfield
12	INITIAL	AR		AR	Runway FINAL
13	RWY 12	AR		AR	Threshold Runway 12
14					
15					TANKER: 47Y; 18K; Comm 1; Ch 2

* AR = AS REQUIRED

Mission By:

Chopper

DCS Username: Chopper A-10

<https://forums.eagle.ru/member.php?u=130632>

Email Address: mbauercustoms@yahoo.com

