

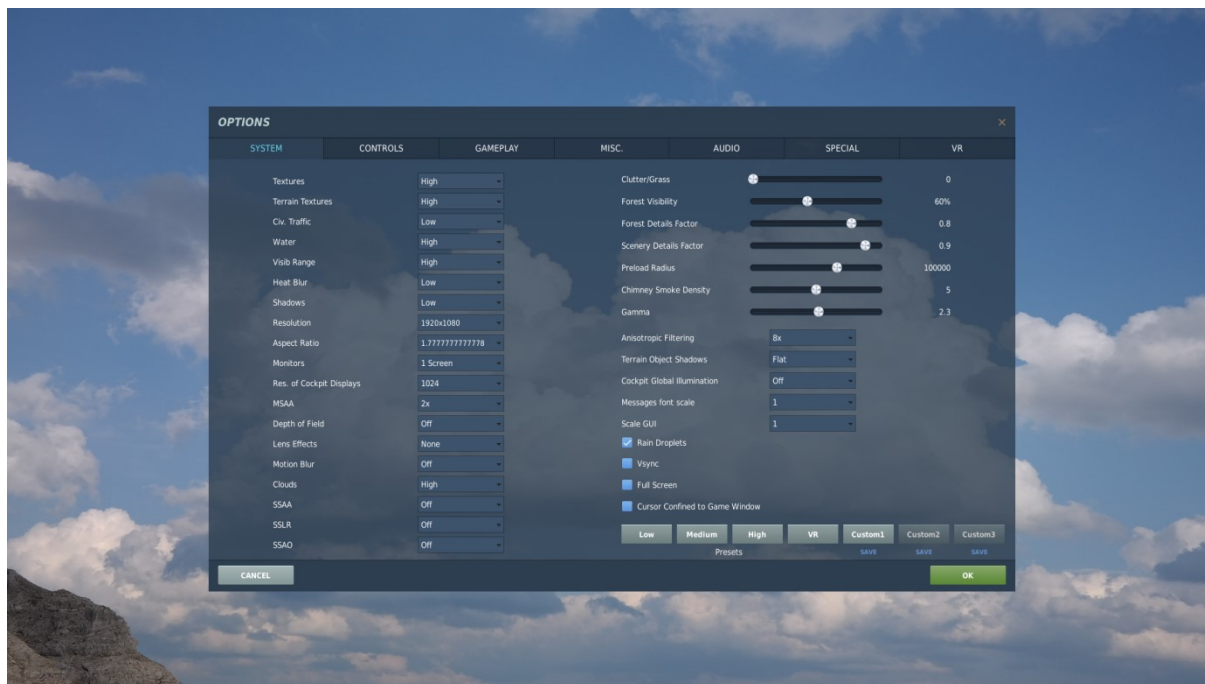
# DCS 3Dmigoto mod troubleshooting guide

---

Use this guide when you think you have installed the mod and the configuration menu is not displayed when pressing LSHIFT+F7 **in cockpit** for su25T.

## Step 1: Check graphics options

You should try to set options below (MSAA should be also OFF or x4), relaunch DCS and check if menu is displayed

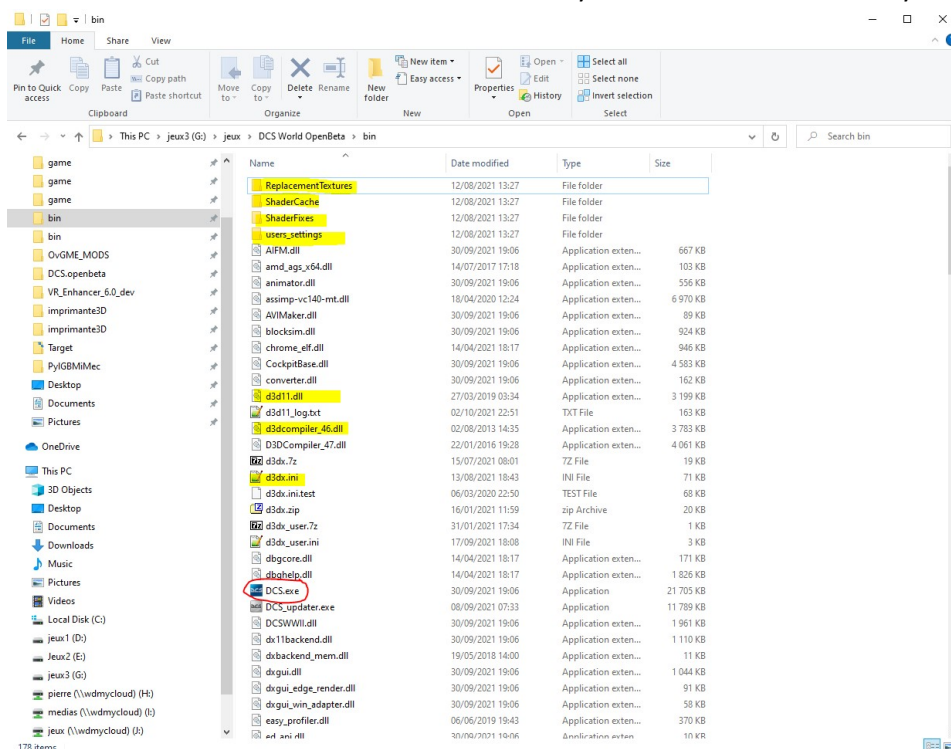


If these options are working, check your options one by one to define which one is breaking the mod (see 1<sup>st</sup> post of forum thread to check which options are supported)

## Step 2: Check mod installation standard version

You must install only the 3DmigotoDCS\_VR\_\*. \* directory provided in the zip. Do not install the 3DmigotoDCS\_VR\_\*. \* \_openXR directory.

You should have directories and files colored in yellow in the same directory than DCS.exe is ([DCSinstallPATH]\bin)

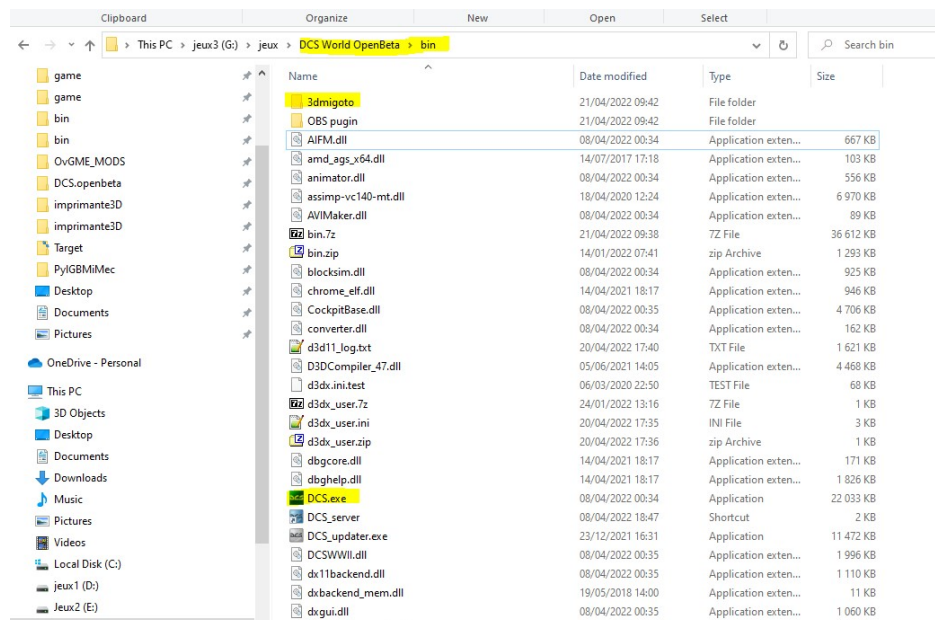


## Step 2: Check mod installation OpenXR version

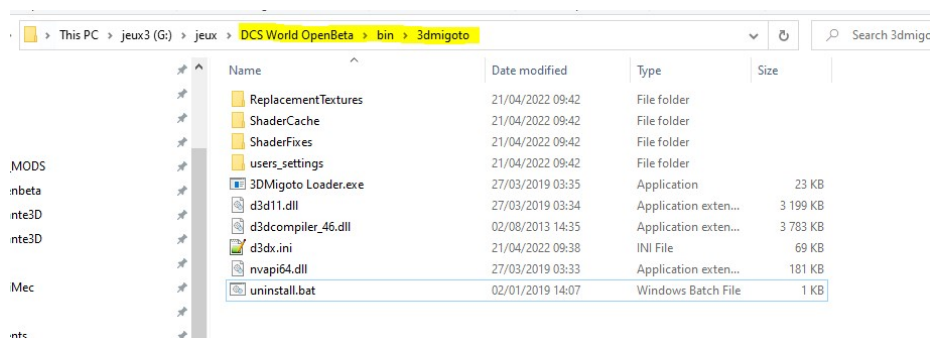
You must install only the 3DmigotoDCS\_VR\_\*.\*)\_openXR directory provided in the zip. Do not install the 3DmigotoDCS\_VR\_\*.\*)\_ directory, it will create conflict with OPENXR mod.

You should have directories and files colored in yellow in the “3dmigoto” directory in the same directory than DCS.exe is ([DCSinstallPATH]\bin) :

3Dmigoto directory :



Content of 3dmigoto directory



## Step 3: Check if mod is working

In [DCSinstallPATH]\bin (or [DCSinstallPATH]\bin\3dmigoto if you are using OpenXR version) edit file d3dx.ini (with notepad++ or other good editor) and modify line “hunting=0” by “hunting=1”

```

G:\jeux\DCS World OpenBeta\bin\d3dx.ini - Notepad++
File Edit Search View Encoding Language Settings Tools Macro Run Plugins Window ?
options.lua d3dx.ini startup.cfg d3dx.ini BoS_VR.tmc startup.cfg
267 ;wrap = false
268 ;convergence = 1.45, 1.13, 0.98
269 ;z = 0.25, 0.5, 0.75
270 ;transition = 100
271 ;transition_type = cosine
272
273 ; Example of a preset override that can be referenced by one or more [ShaderOverride*]
274 ; sections which can be activated / deactivated automatically when one of the shader
275 ; overrides is activated / deactivated. This is useful for setting automatic
276 ; convergence for specific scene.
277 ;[Preset1]
278 ;convergence = 0
279 ;transition = 100
280 ;transition_type = linear
281
282
283 -----
284 ; Shader hunting options.
285 ; Default setup is to use keyboard similar to Helix presets
286 -----
287 [Hunting]
288
289 ; 0: Release mode is with shader hunting disabled, optimized for speed.
290 ; 1: Hunting mode enabled
291 ; 2: Hunting mode "soft disabled" - can be turned on via the toggle_hunting key
292 hunting=0
293
294 ; Highlight mode of currently selected shader / rendertarget.
295 ; "skip" = skip shader. don't render anything using the currently selected shader.
296 ; "original" = fall back to original shader if the currently selected shader was patched.
297 ; "pink" = make the output hot pink to make it standout.
298 ; "mono" = disable stereo for the selected shader / rendertarget.
299 ; "zero" = shader output is all zero. NOTE: this has a big performance impact.

```

Then launch DCS (launch “3DMigoto Loader.exe” before dcs.exe if you are using OPENXR mod) and press NUMPAD\_0. You should have green lines as displayed as below



If not: install the mod again and do the same checks

If yes: congratulation, the mod is installed well and working, but the game configuration creates issue, maybe some mods. So do next operations below.

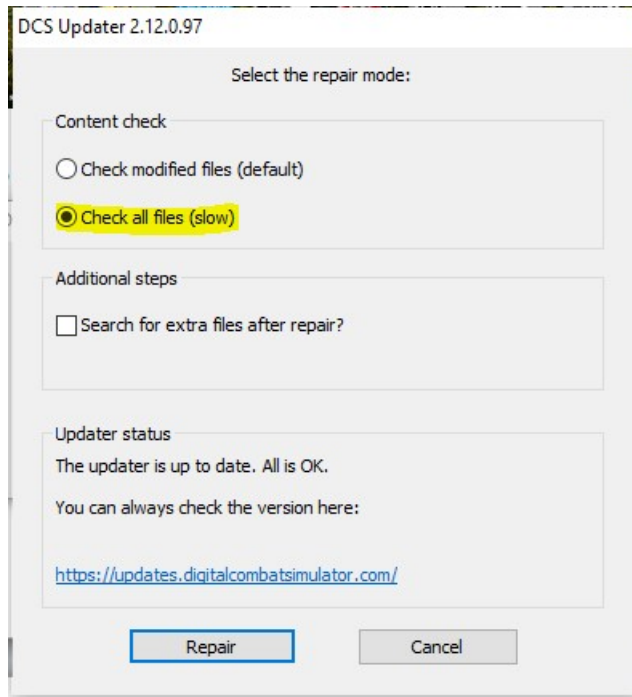
## Step 4: Do a full repair

Uninstall all mods.

Doing a full repair will clean up effect of all mods changing shaders that may be not compatible with 3DMigoto.



In “Eagle Dynamics” menu, launch “Repair DCS World OpenBeta”, select “check all files (slow)”, then push “repair” button



Once repair finished, launch game again and check if menu appears when pressing LSHIFT+F7 **in cockpit** for su25T.

If yes, replace “hunting=1” by “hunting=0” in d3dx.ini.

If you are using mods, install them one by one and check which one is breaking 3dmigoto mod.

If not post in 3dmigoto thread in forums.

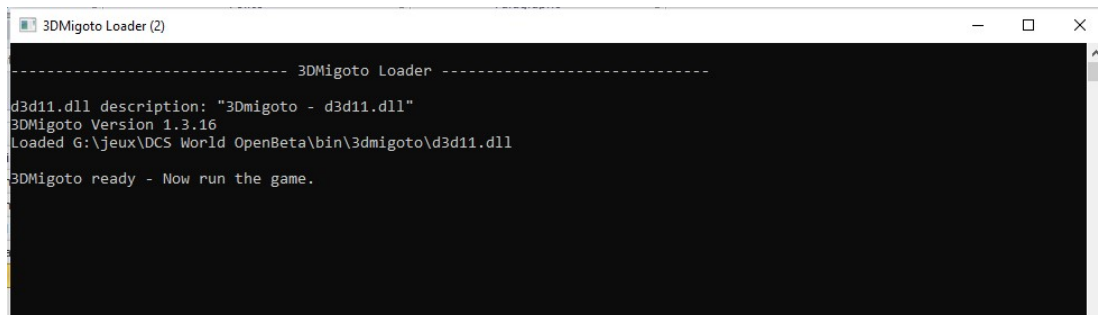
## Frequent issues

### 1. My settings are not saved by ALT F12

If your game is installed in “program files”, there is a windows limitation to write in this area. Launch DCS in admin mode.

### 2. I use OPENXR mod and there is no SHIFT+F7 menu

Ensure you launch “**3DMigoto Loader.exe**” prior launching DCS. A MSDOS windows should be displayed and disappear when DCS is launched.



### 3. The 3DMigoto loader windows is not detected DCS launch

If your game is installed in “program files”, you launched it in admin mode. “**3DMigoto Loader.exe**” must also be launched in admin mode.